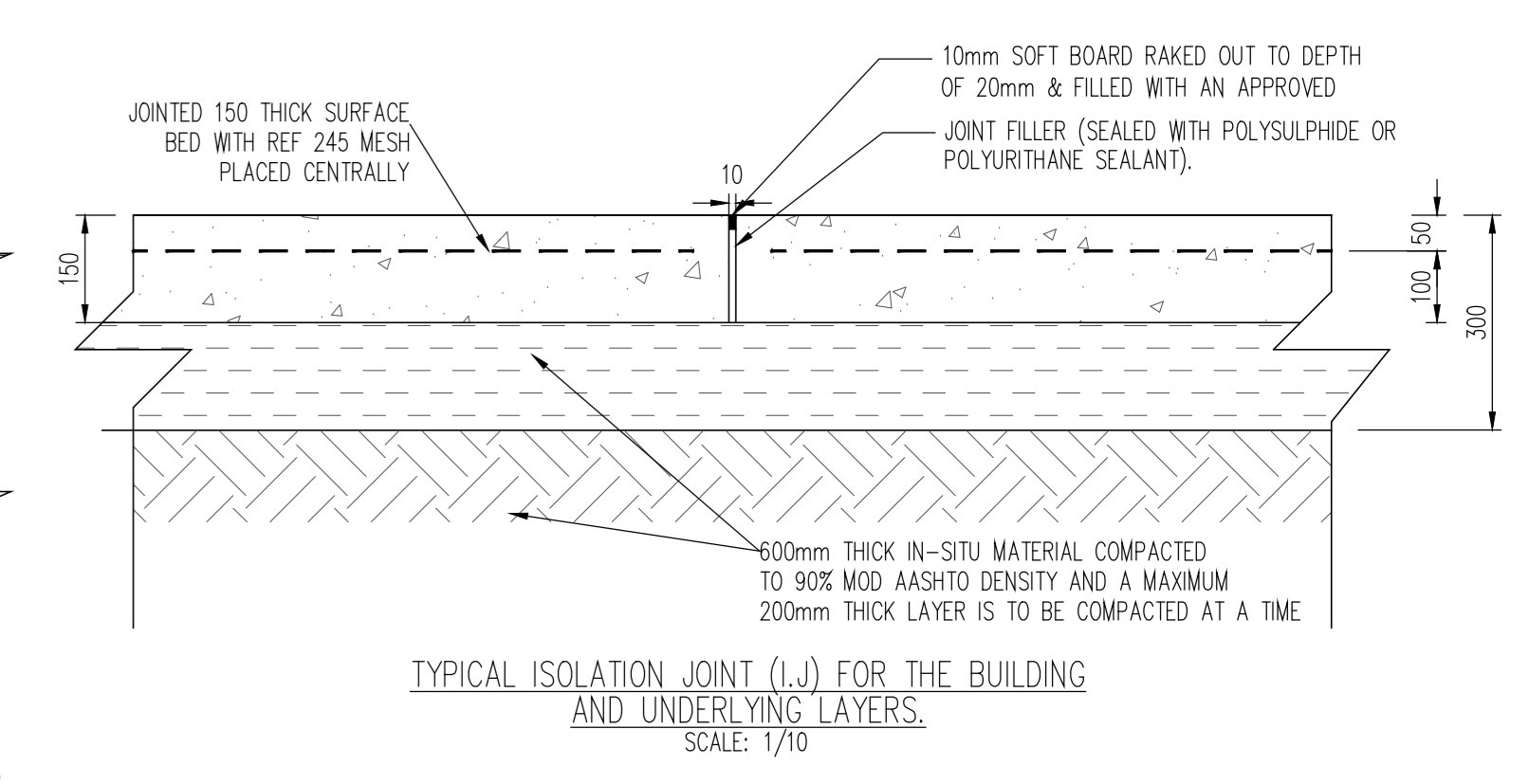
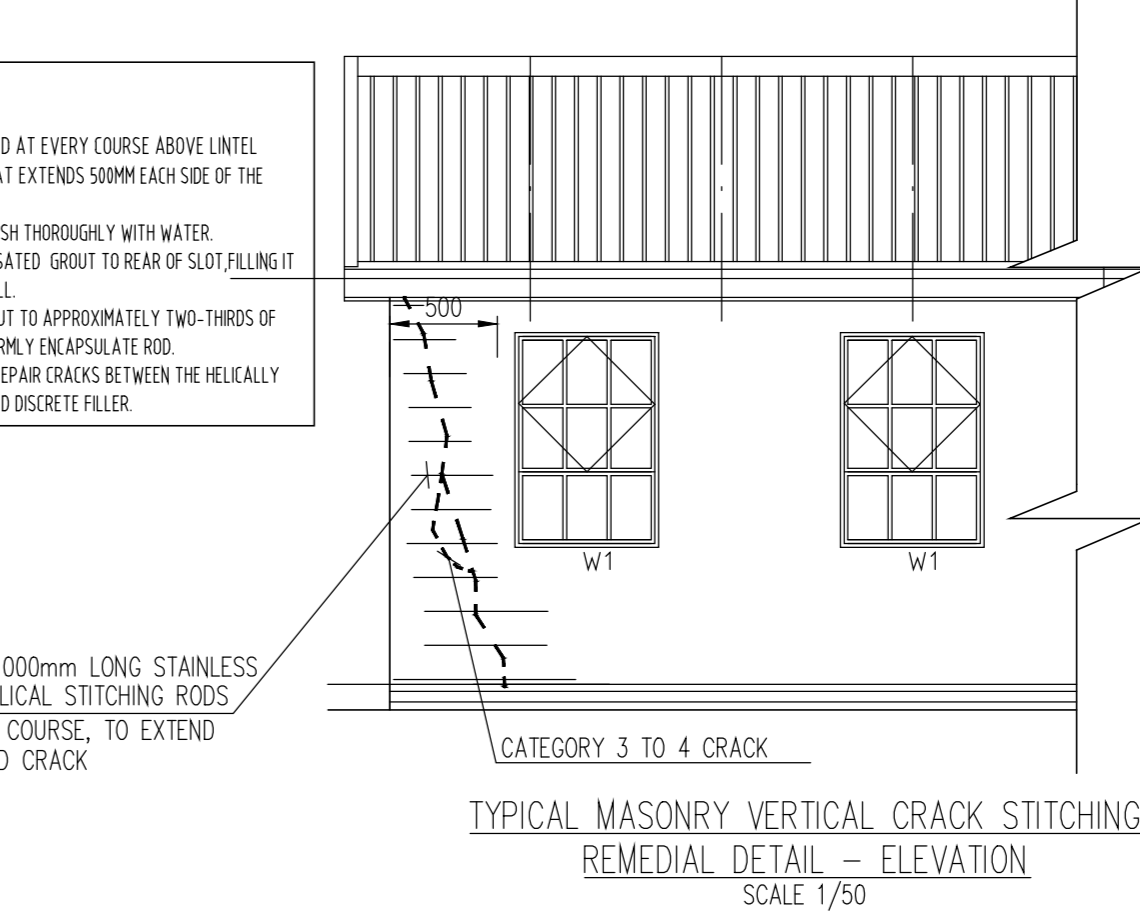
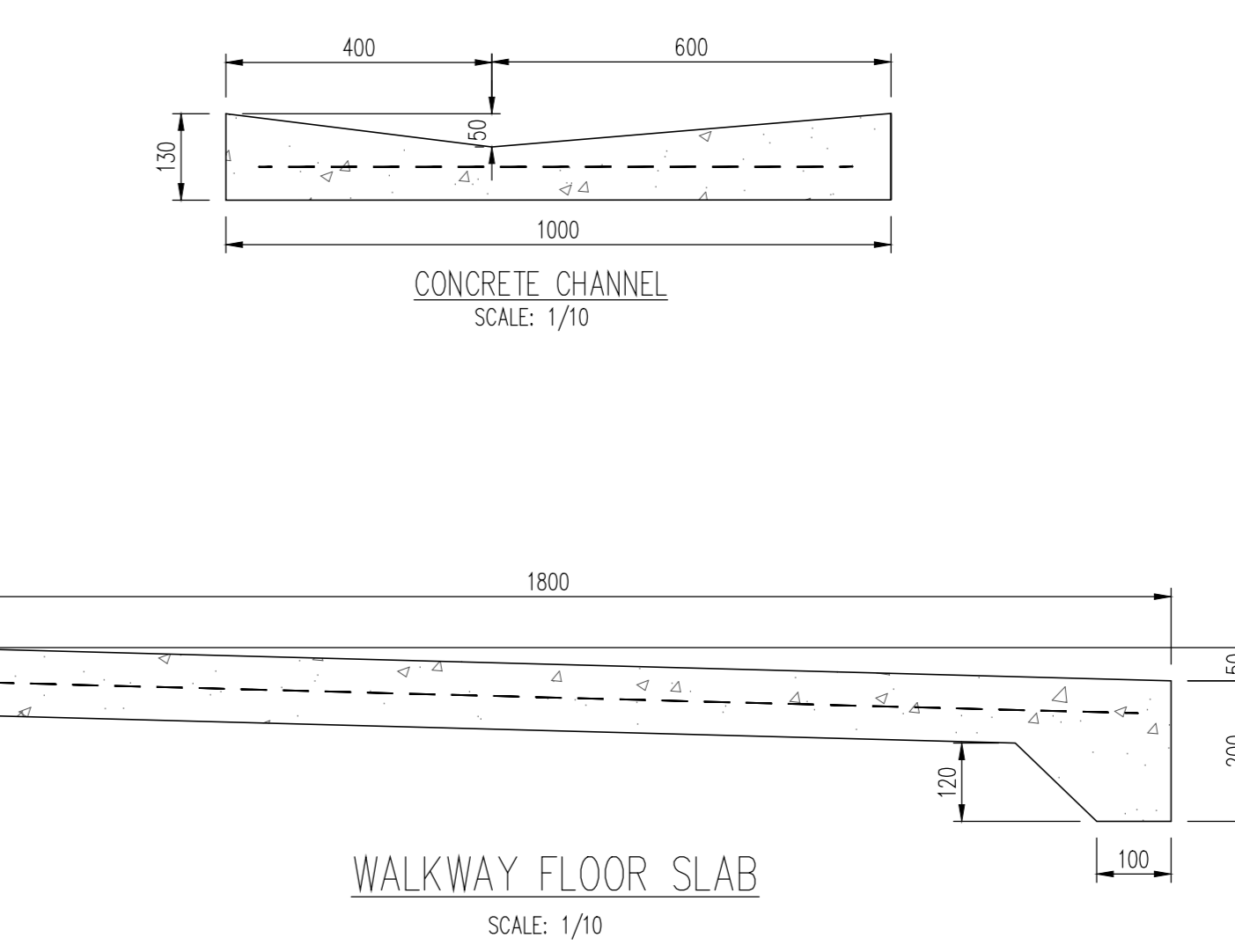
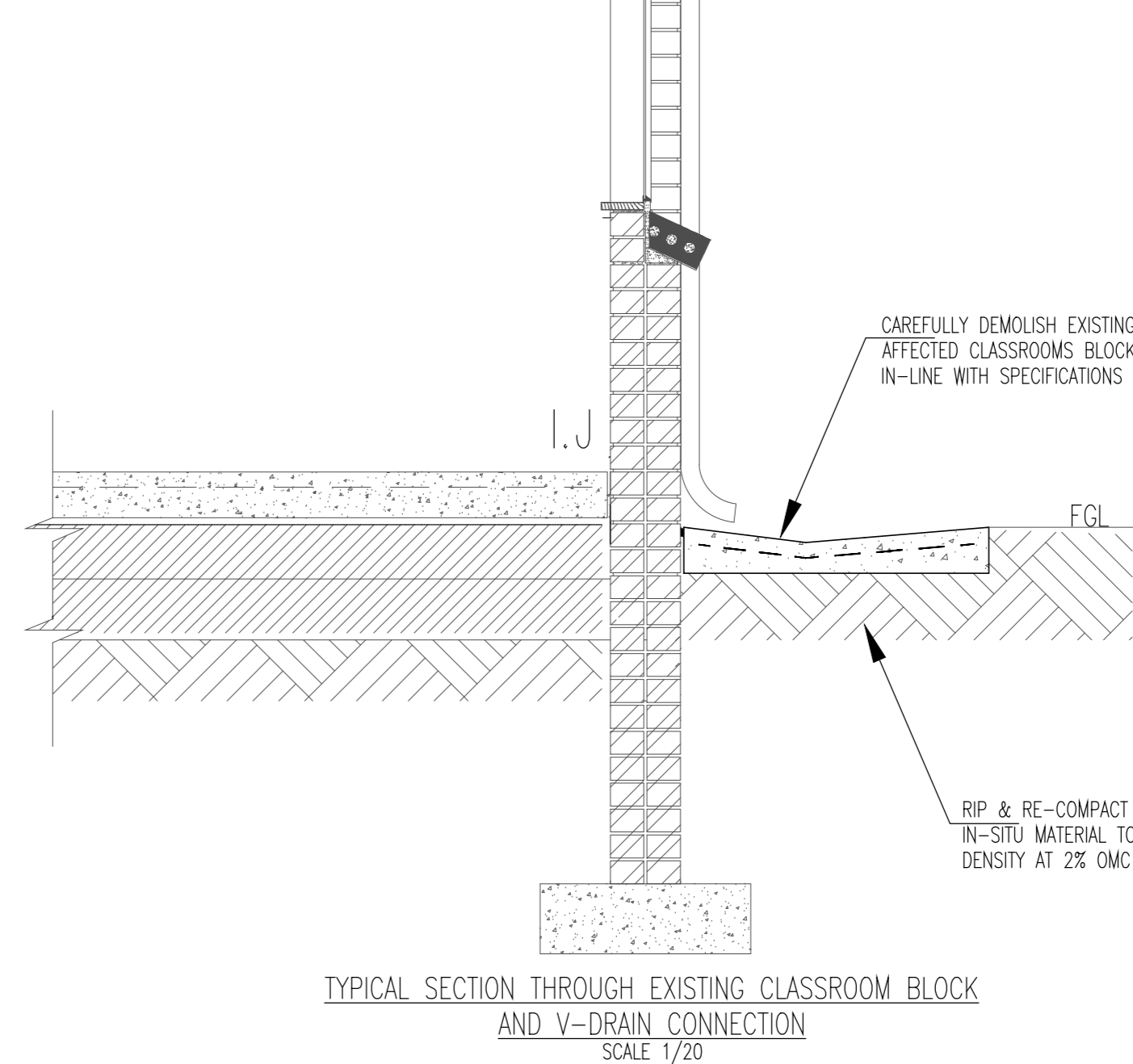
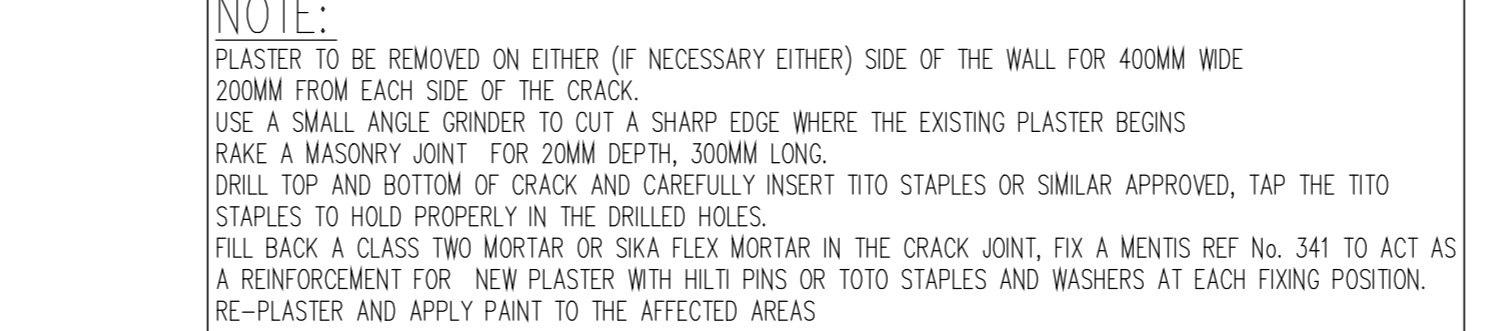
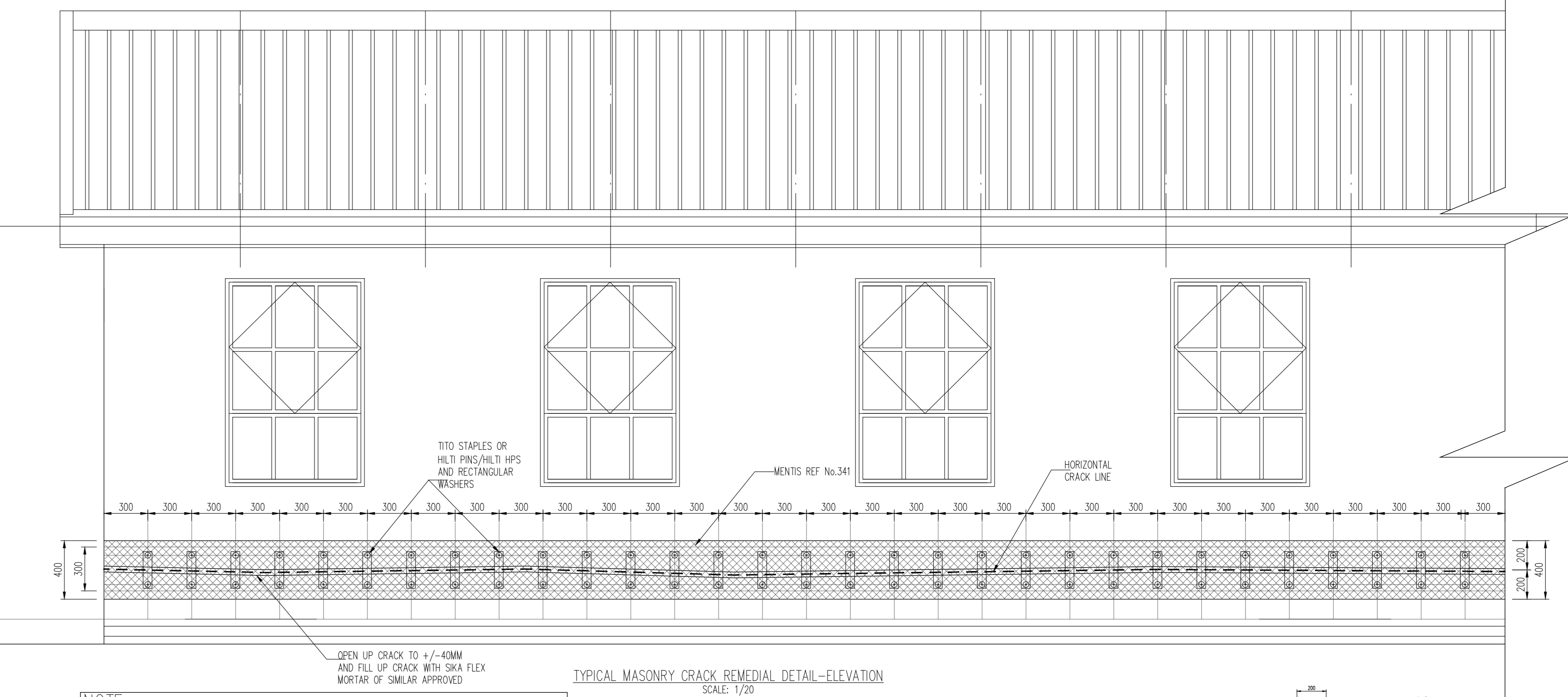
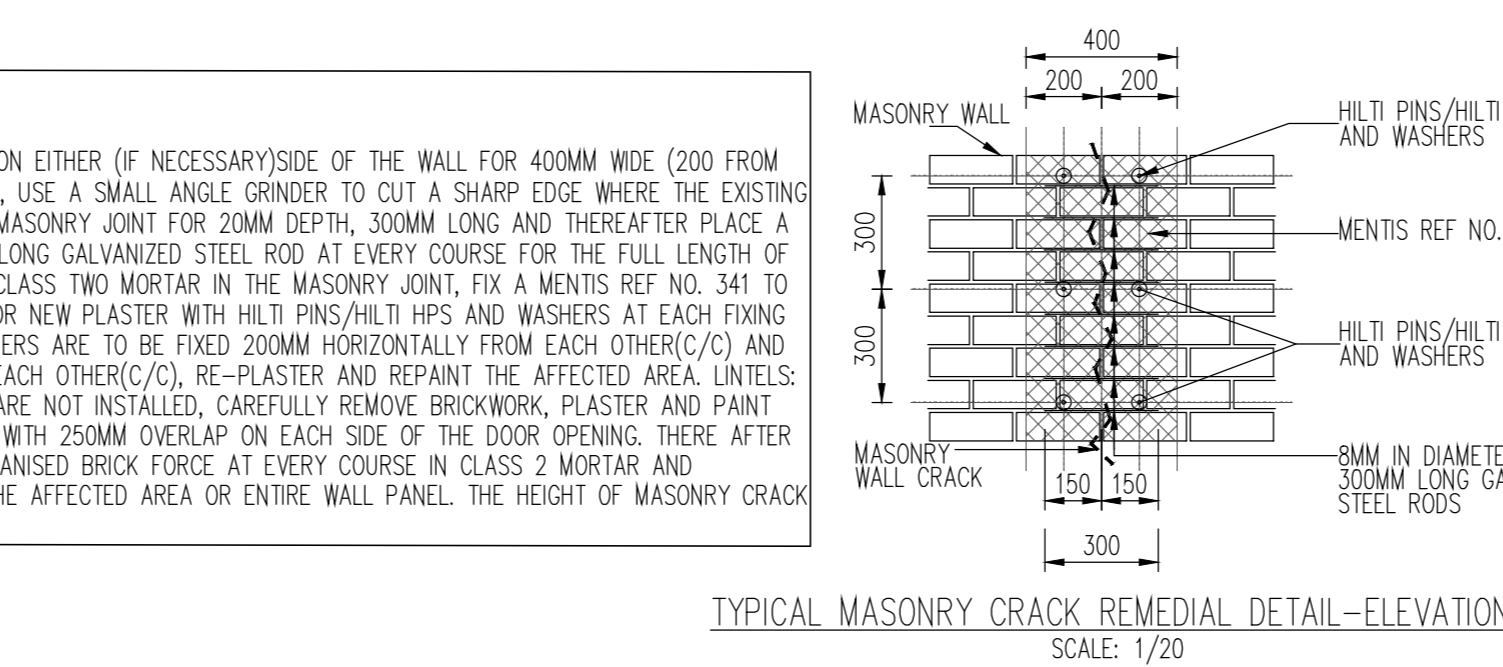
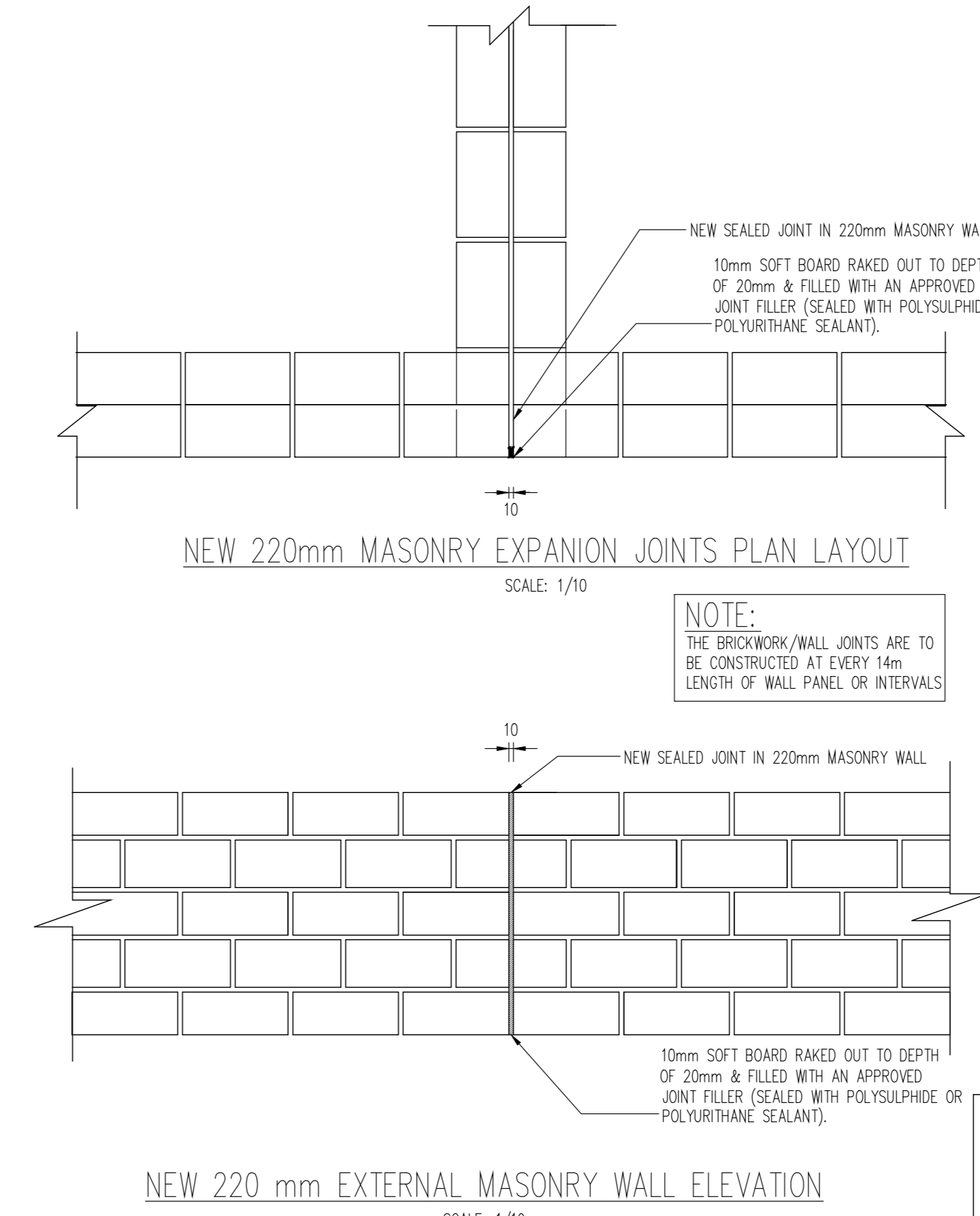
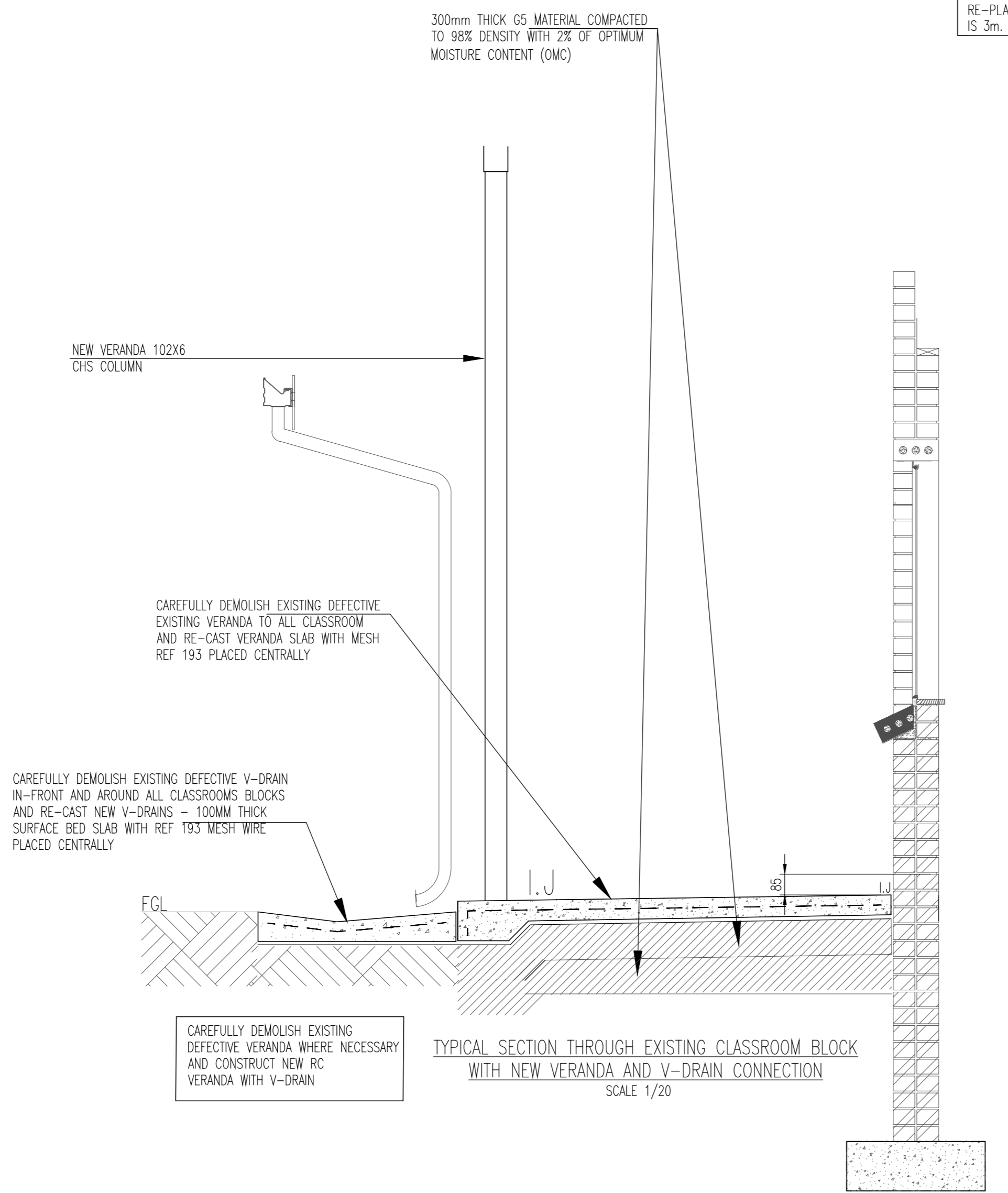
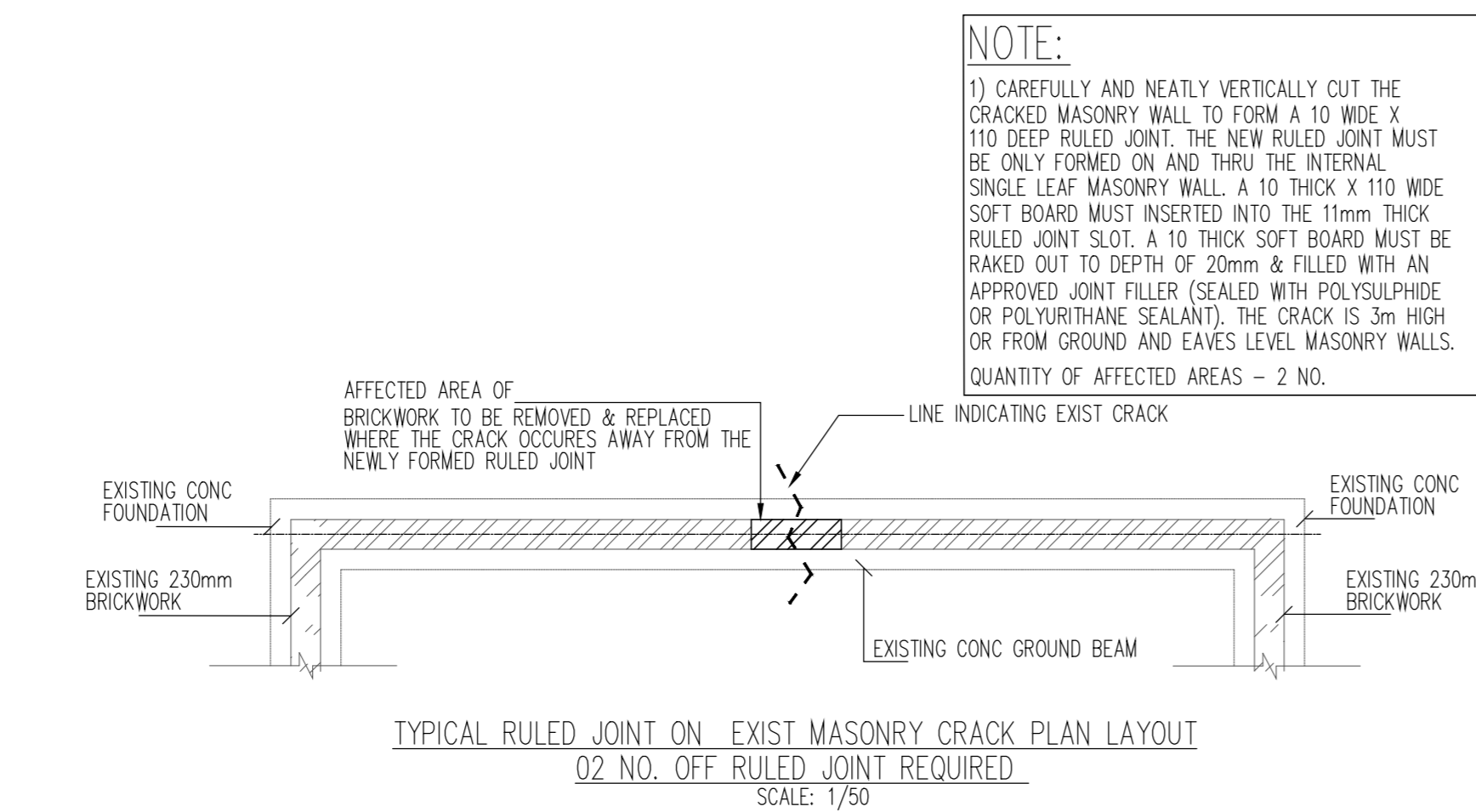
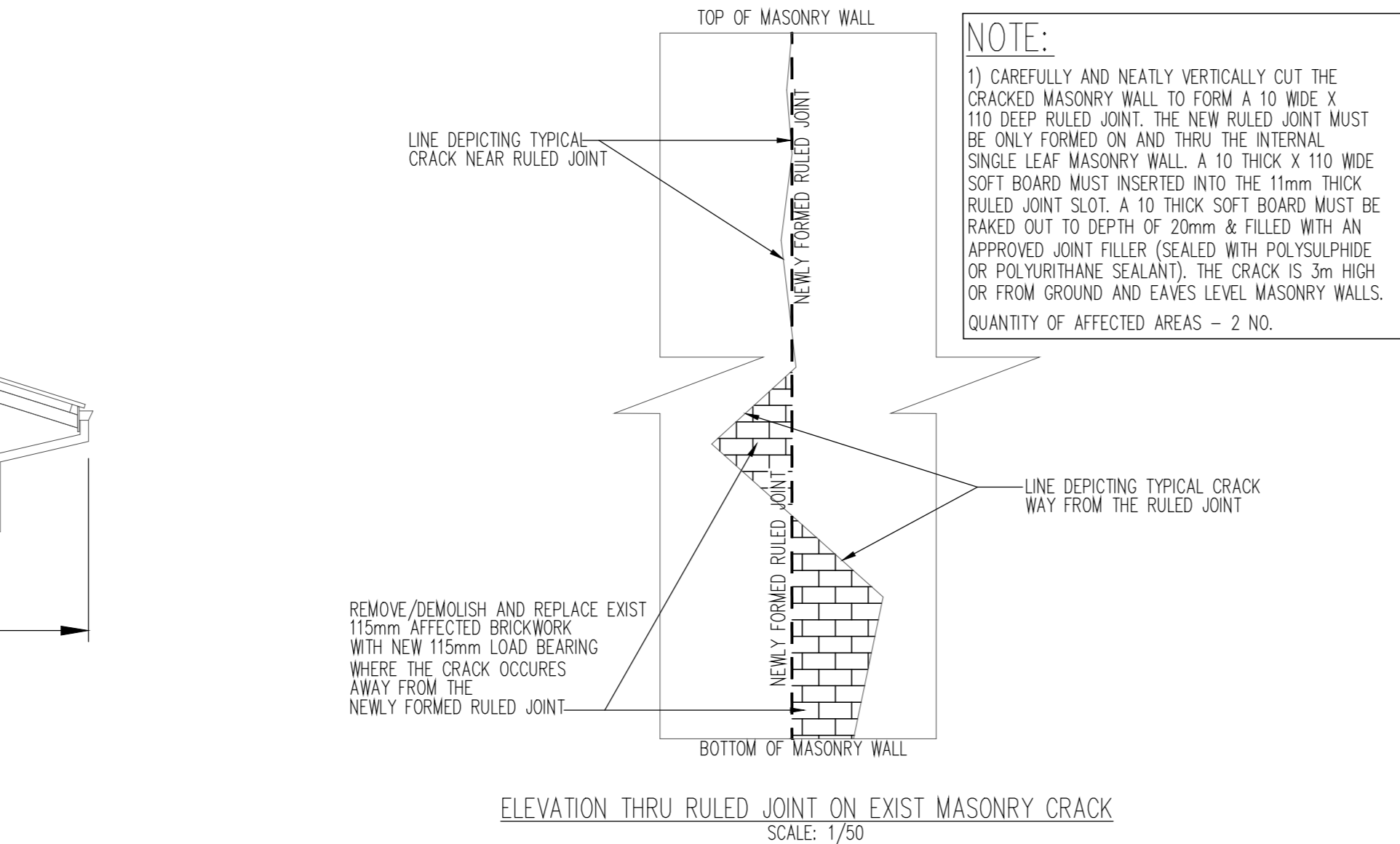
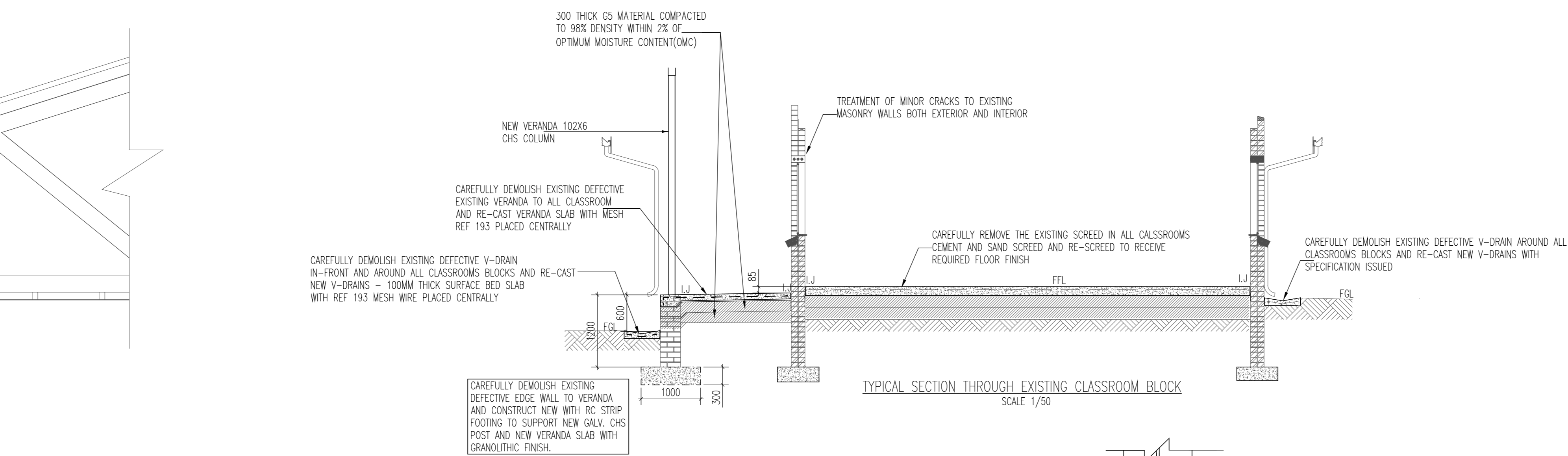


TANK STAND STRIP FOOTING BENDING SCHEDULE INFO BASED ON 1No. BASE											
UNIT		DIA	No. of BARS			TOTAL L mm.	TOTAL LENGTH IN METERS				
MC.	No.	BAR UNIT	UNIT	TOTAL	S/C		A	B	C	D	E/R
FOOTING 1	2	Y12	01	8	16	3400	35	3200			
		R8	02	13	26	1700	60	200	550		
FOOTING 2	2	Y12	01	8	16	3400	35	1690			
		R8	02	13	26	1700	60	200	550		



GENERAL NOTES :

1. ALL WORK TO BE IN ACCORDANCE WITH THE RELEVANT DEPARTMENTAL SPECIFICATIONS.
2. WRITTEN DIMENSIONS TO PREVAIL WHERE DISCREPANCIES ARISE. ALL SUCH DISCREPANCIES SHALL BE REPORTED TO THE ENGINEER.
3. NO CONCRETE SHALL BE PLACED PRIOR TO THE ENGINEER OWING WRITTEN APPROVAL FOR SAME.
4. OPEN TRENCHES, ROAD FORMATION ETC. SHALL BE INSPECTED BY THE ENGINEER PRIOR TO FURTHER CONSTRUCTION.
5. ALL REINFORCED CONCRETE SHALL BE 30MPa/19mm.
6. SAW CUTTING WHERE APPLICABLE TO BE DONE BETWEEN 12 AND 24 HOURS AFTER CONCRETE PLACEMENT.
7. ALL CONTROL TESTING APPLICABLE TO EARTHWORKS AND CONCRETE CONSTRUCTION SHALL BE CARRIED OUT STRICTLY IN ACCORDANCE WITH THE RELEVANT DEPARTMENTAL SPECIFICATIONS.
8. MILD AND HIGH TENSILE REINFORCEMENT TO SABS 1435 WITH CHARACTERISTIC YIELD STRENGTHS OF 250MPa AND 450MPa RESPECTIVELY.
9. MESH REINFORCEMENT IN CONCRETE ROADWAY WHERE APPLICABLE SHALL BE PLACED 50mm FROM THE TOP SURFACE.
10. ROADWAY CONCRETE WHERE APPLICABLE SHALL BE POWER FLOATED, THEN UNIFORMLY BRUSHED. A TEST PANEL SHALL BE CONSTRUCTED FOR APPROVAL.
11. CONTRACTOR TO BE RESPONSIBLE FOR MAINTAINING CORRECT COVER & POSITION OF REINFORCING DURING POURING OF CONCRETE.
12. APPROVED CURING MEASURES TO BE MAINTAINED FOR MIN. 7 DAYS AFTER CONCRETE PLACEMENT.

13. COVER TO REINFORCEMENT	TOP	BOTTOM	SIZE
PAV & SHIP TROTTINGS	150	150	150
COLUMNS	40	40	40
EXPANDED GROUND BEAMS	100	100	100
EXPANDED BEAMS	100	100	100
EXPANDED SLABS	50	50	50
EXPANDED SLABS	50	50	50
PC RETAINING WALLS	150	150	150

14. ALL EXTERIOR TIEBARS MEMBERS WITH GROUND CONTACT ARE TO BE TREATED WITH TWO COAT OF GROSSOCE.
15. ALL EXTERIOR TIEBARS MEMBERS ABOVE GROUND ARE TO BE TREATED WITH A COPPER COLOUR ARSINIC (CCA)
16. ALL EXTERIOR EXPOSED TIEBARS ABOVE GROUND ARE TO BE TREATED WITH TWO COAT OF GROSSOCE.

Project Description :			
BONAMUVA PRIMARY SCHOOL			
Contract No. RFP 116/2018			
Drawing Title: REFURBISHMENT AND REPAIRS RELATED DETAILS FOR CIVIL & STR. WORKS			
Drawn	DA	Checked	LD
Designed	LD	Approved	TFN
Scale/s	AS SHOWN	Date	AUGUST, 2022
Drawing No.	11910-BONPS-BRW-01	Revision	0

FOR IPAC STAGE 3 ONLY